

REPORT OF THE ONLINE FEEDBACK RECEIVED FROM THE STUDENTS

Total number of students participating in the feedback process- 564.

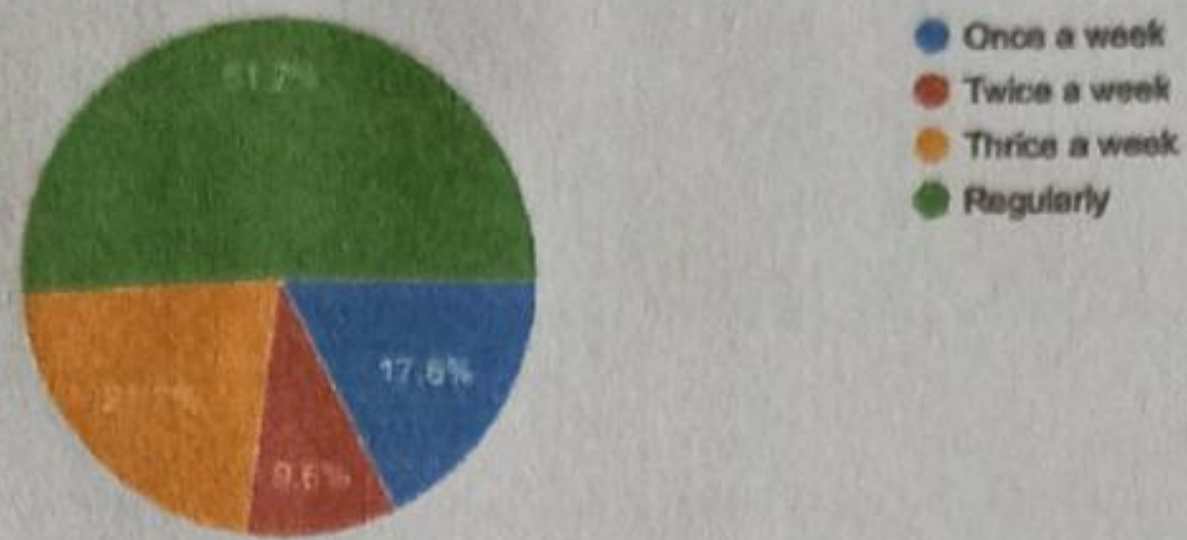
Part I: Teaching, Learning and Evaluation

S. No	Statements	Strongly disagree	Disagree	Neutral	Agree	Strongly agree	Percentage agrees, 4 and above
1.	How often do you approach your teacher before /after the class?	-	122 (never)	94 (Once a month)	45 (Once every 2 weeks)	302 (Once a week)	61.6%
2.	How much syllabus is covered in the class?	-	98 (< 30%)	116 (30-50%)	207 (50-70%)	142 (70-100%)	61.9%
3.	Are your teachers well prepared for class?	36	-	123	-	404	71.7%
4.	Teachers approach to teaching can be best described as	-	68 (fair)	171 (good)	177 (Very good)	147 (excellent)	57.5%
5.	What is the attitude of teacher about extra-curricular activities	80	77	159	95	152	43.8%
6.	Teachers encourage participation and discussion in class	55	67	110	137	194	58.7%
7.	The evaluation process is fair and unbiased	15	34	219	212	83	52.3%
8.	Periodical assessments are conducted as per schedule	57	62	148	141	155	52.5%
9.	Teachers' attitude towards students is friendly & helpful	20	15	150	248	130	67.1%
10.	The campus has adequate power supply.	33	66	148	188	128	56.1%
11.	Do you find the program outcomes relevant to your academic and professional goals?	-	83	149	-	331	58.7%
12.	What percentage of teachers use ICT tools such as LCD Projector, Multimedia, handouts, references etc. while teaching	-	255	138	126	44	30.1%
13.	I have learnt and understood the subject in this course	27	28	156	280	72	62.5%

Statement-wise analysis

How frequently do you attend your class?

563 responses



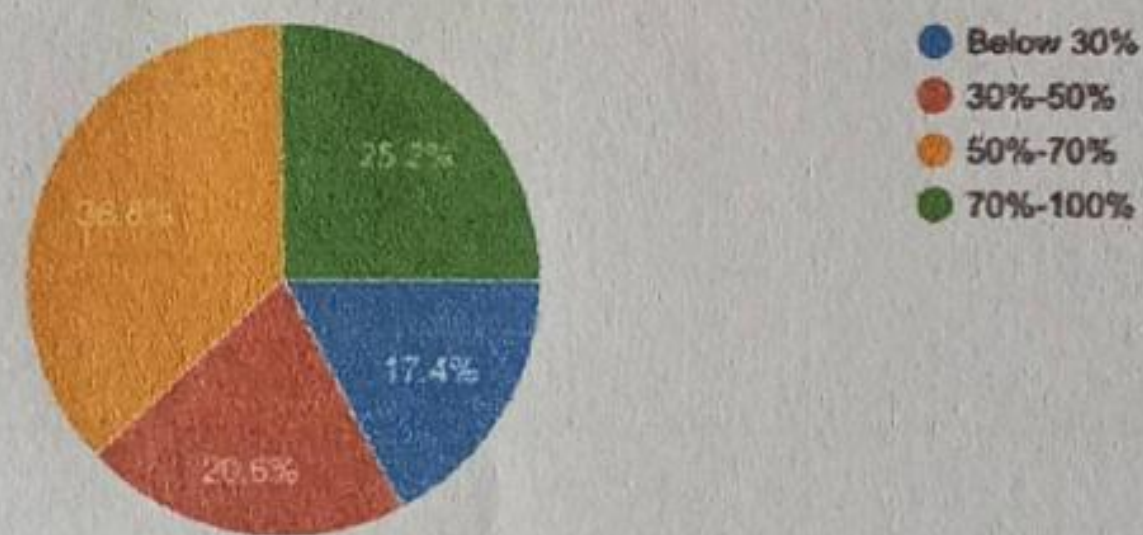
How often do you approach your teacher before /after the class

563 responses



How much syllabus is covered in the class?

563 responses



Are your teachers well prepared for class?

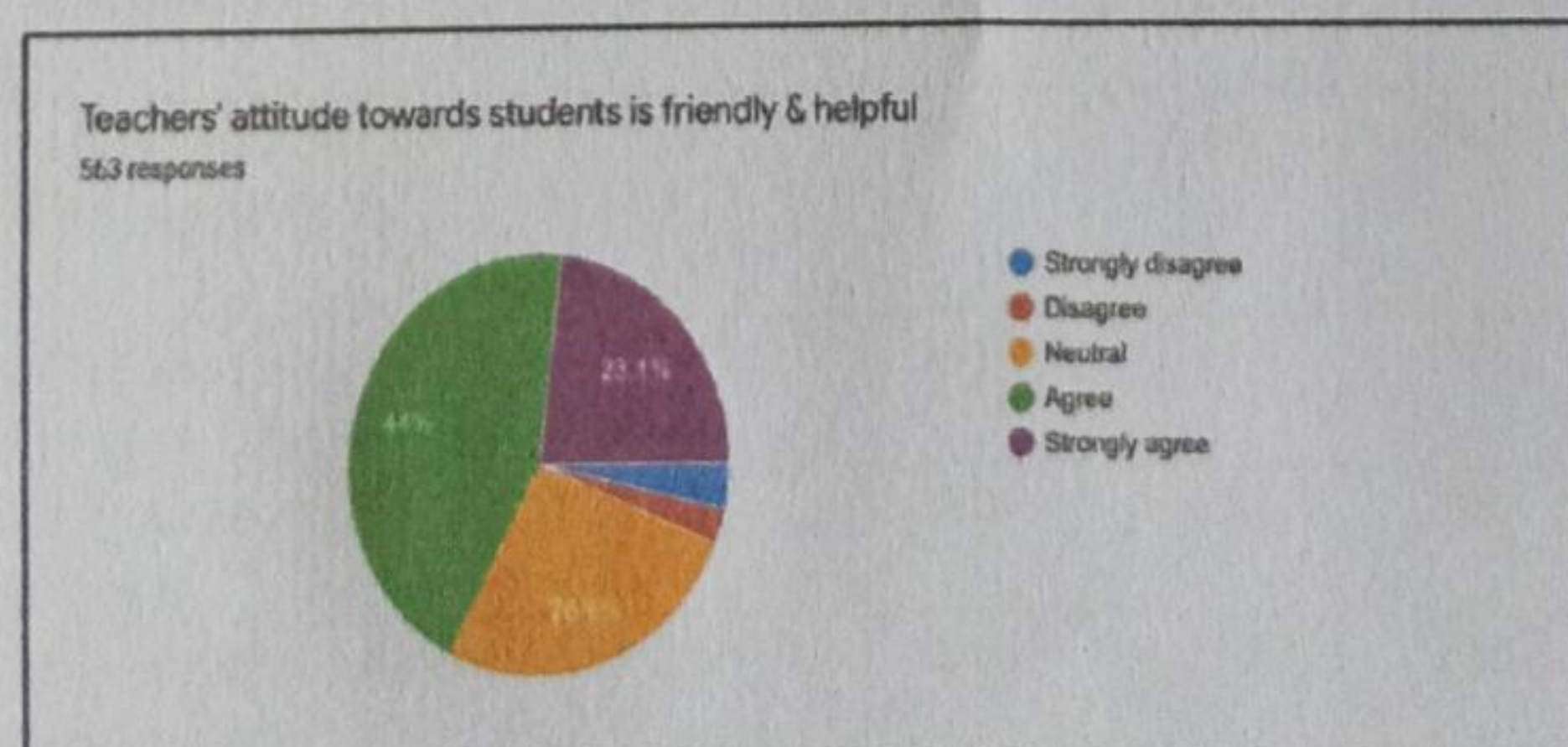
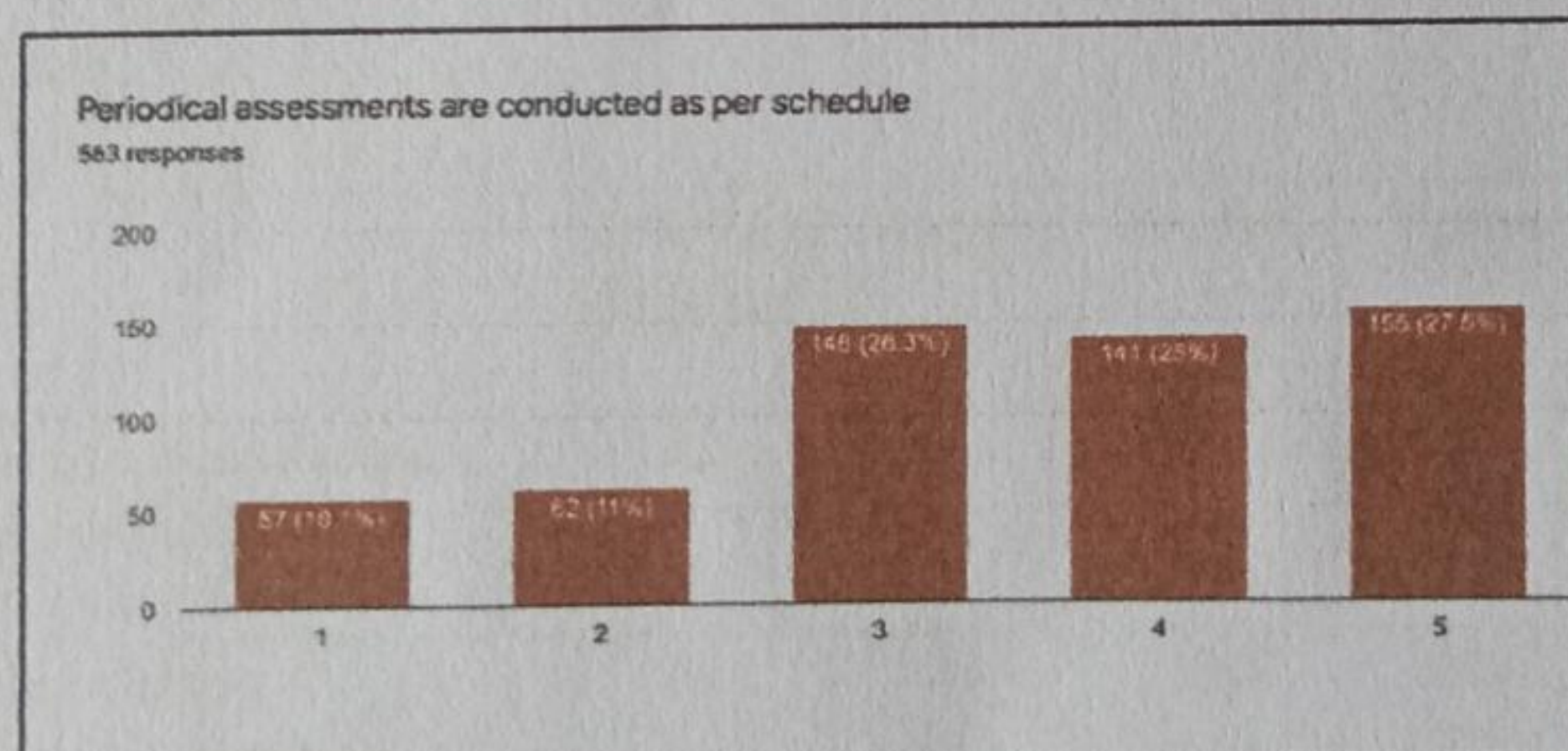
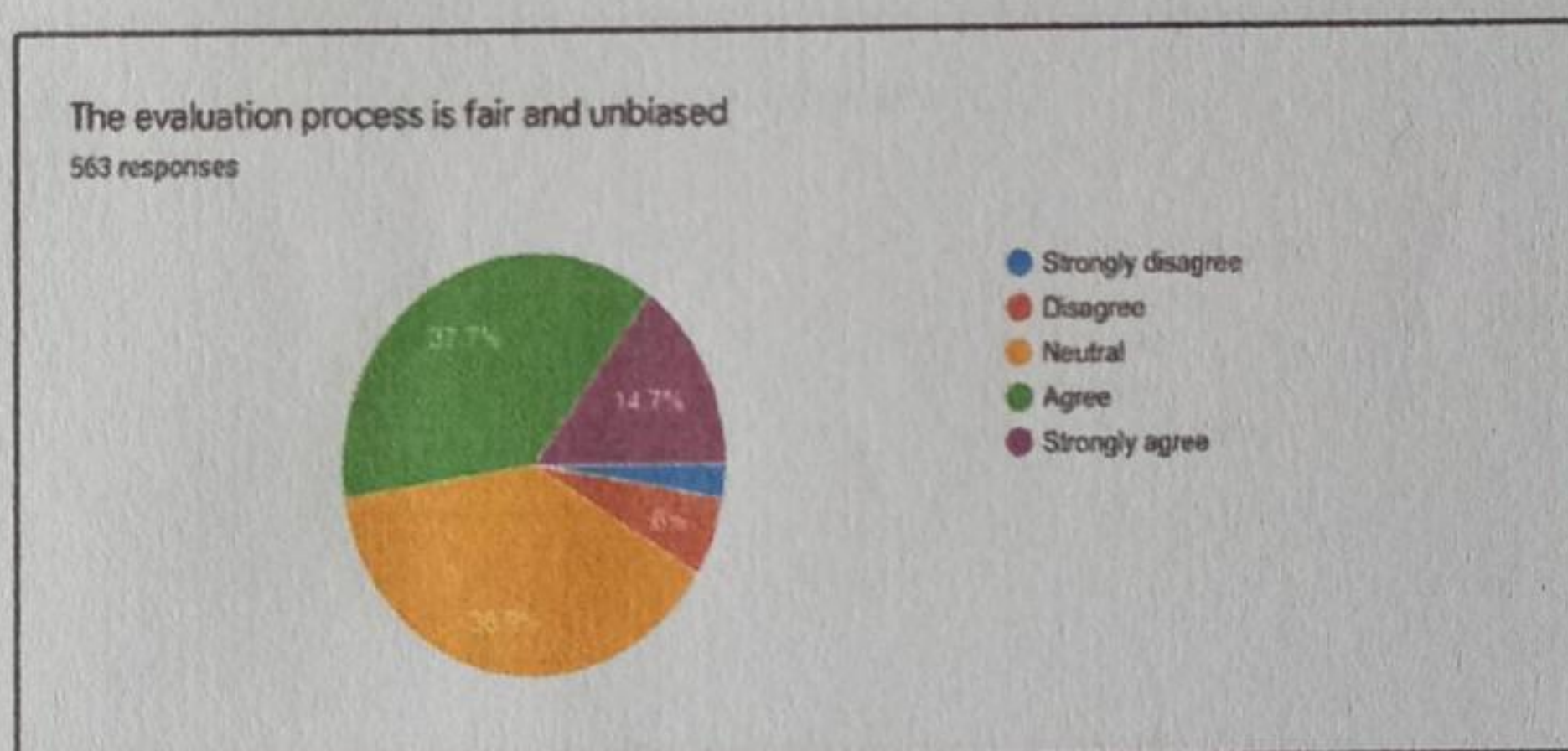
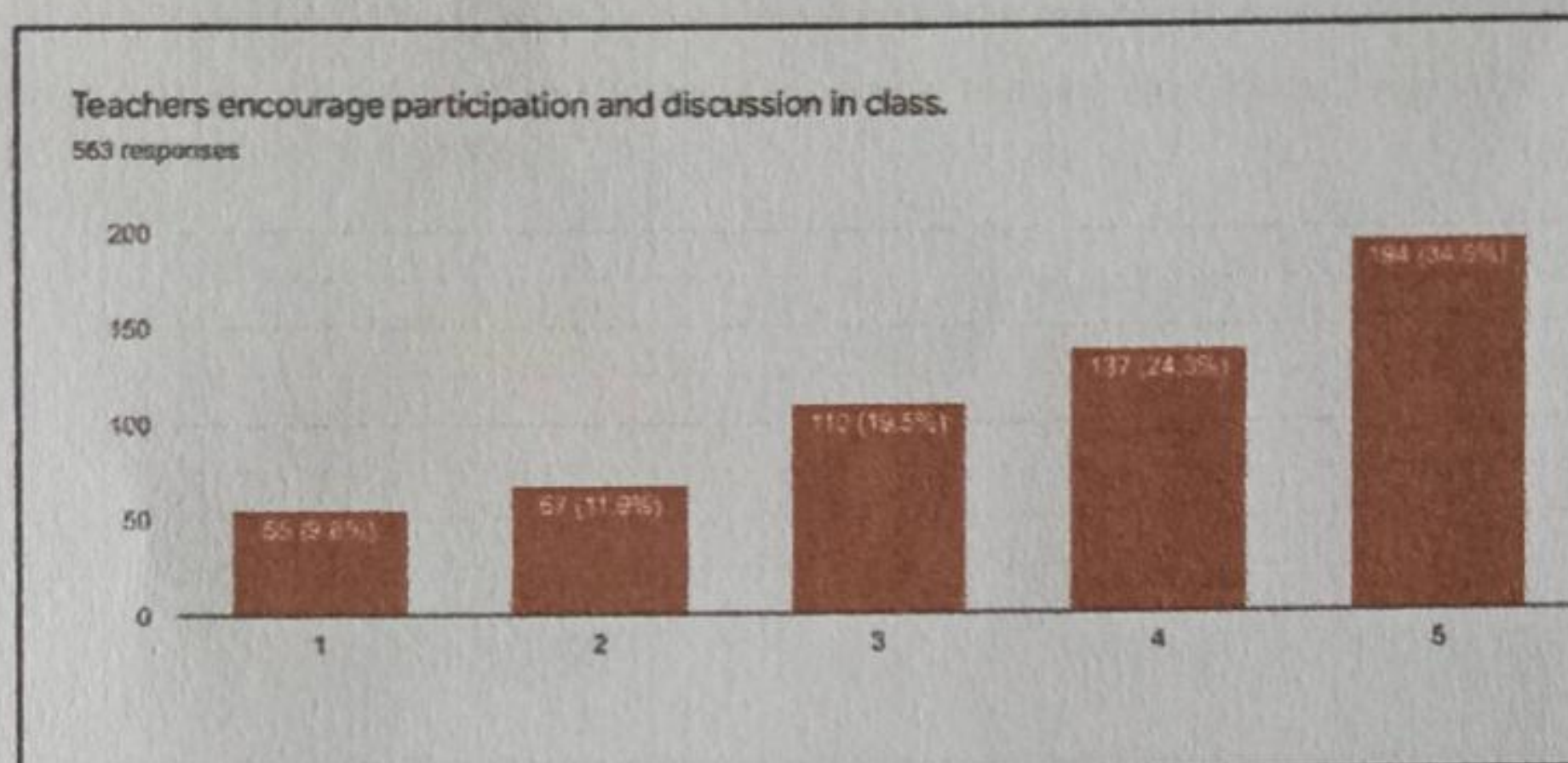
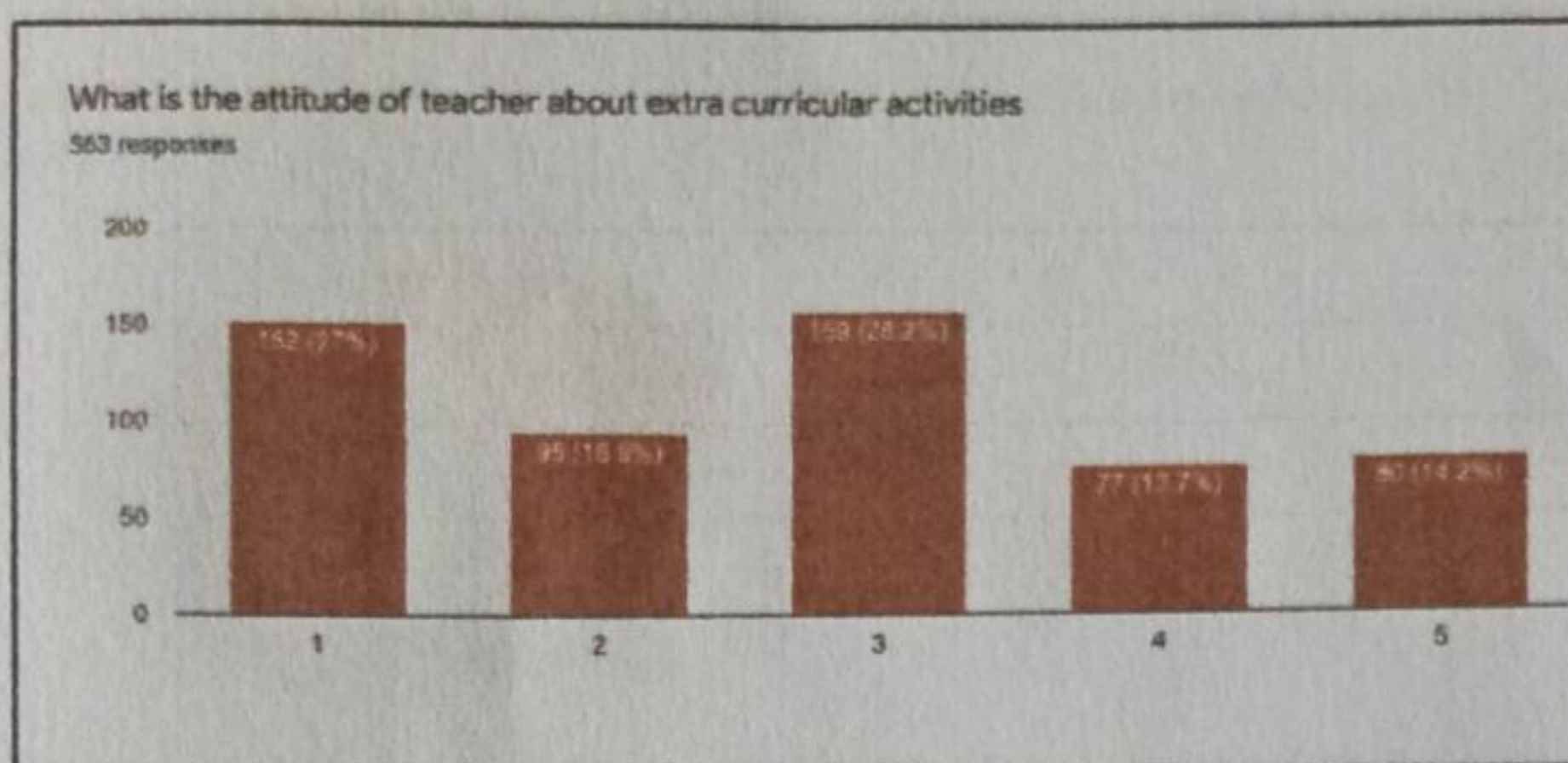
563 responses



Teachers approach to teaching can be best described as

563 responses





Do you find the program outcomes relevant to your academic and professional goals?

563 responses



What percentage of teachers use ICT tools such as LCD Projector, Multimedia, handouts, references etc. while teaching:

563 responses



I have learnt and understood the subject in this course

563 responses

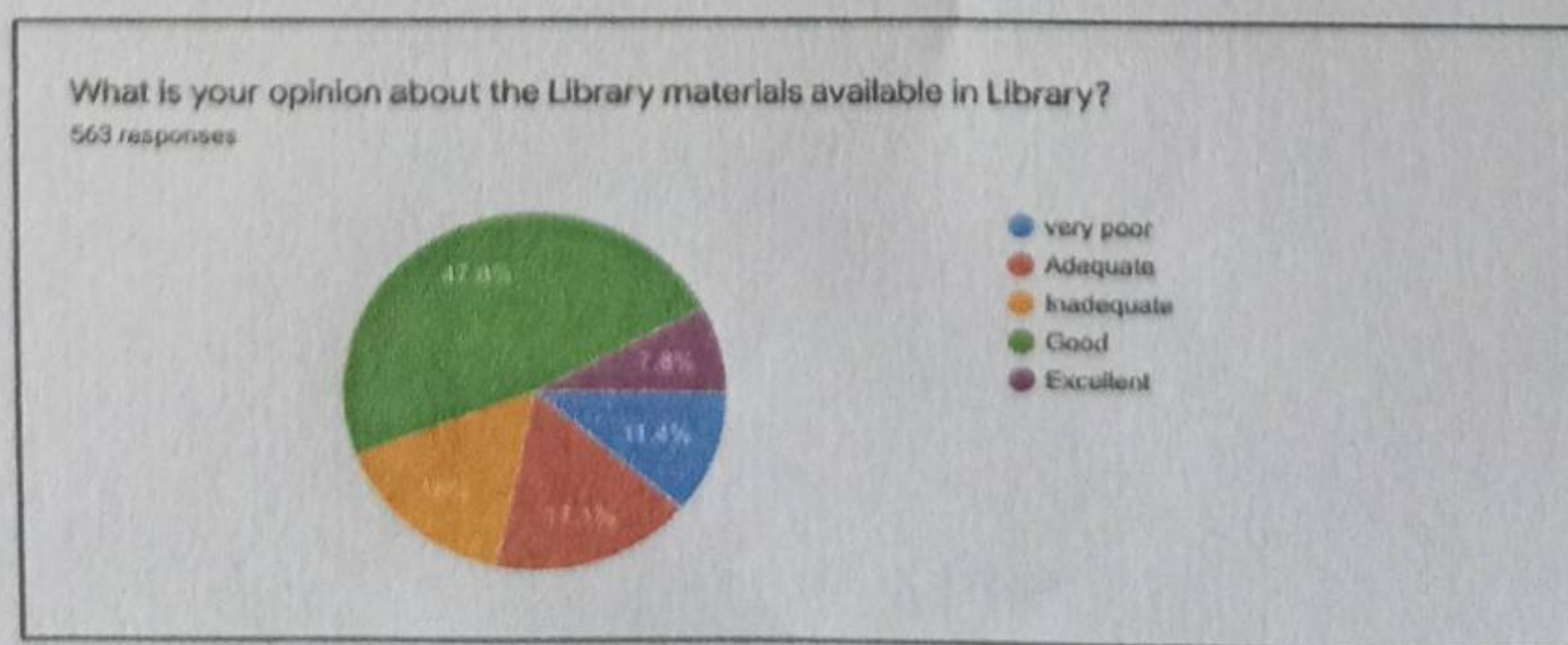
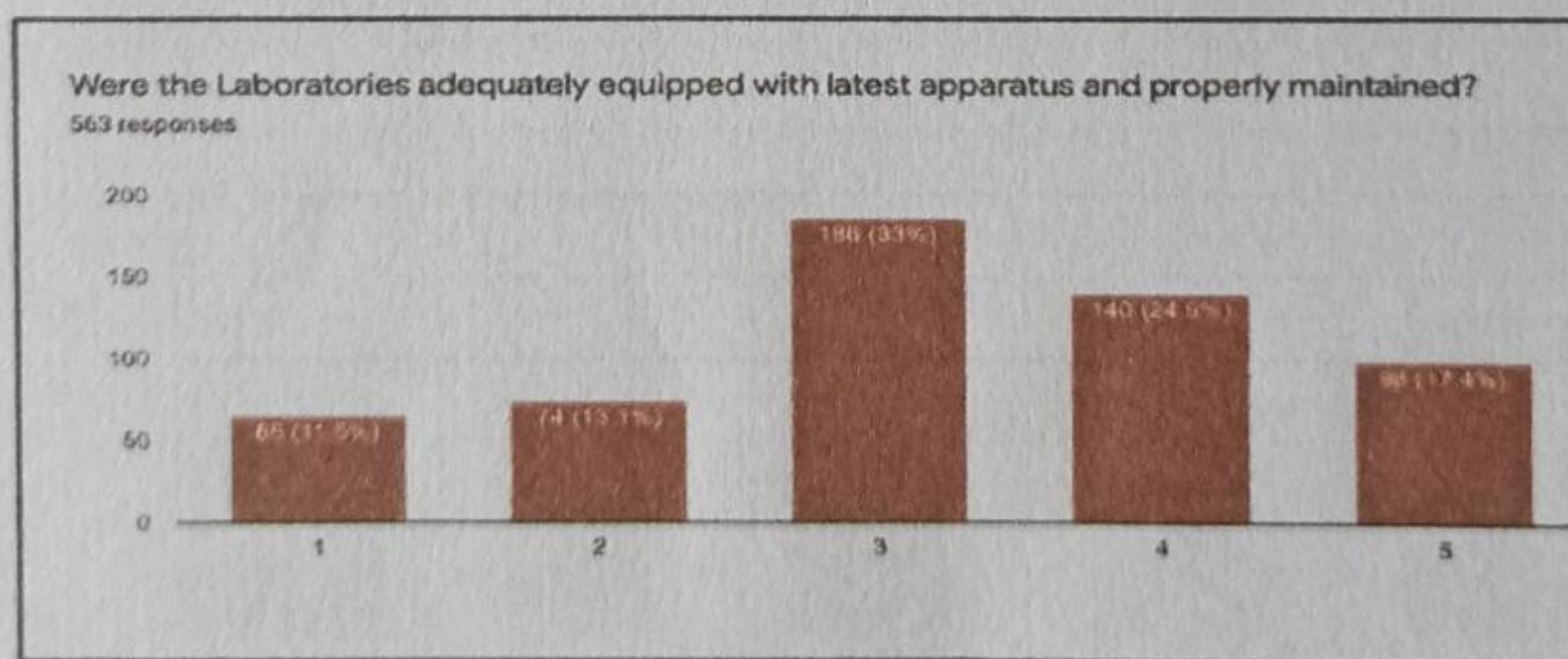
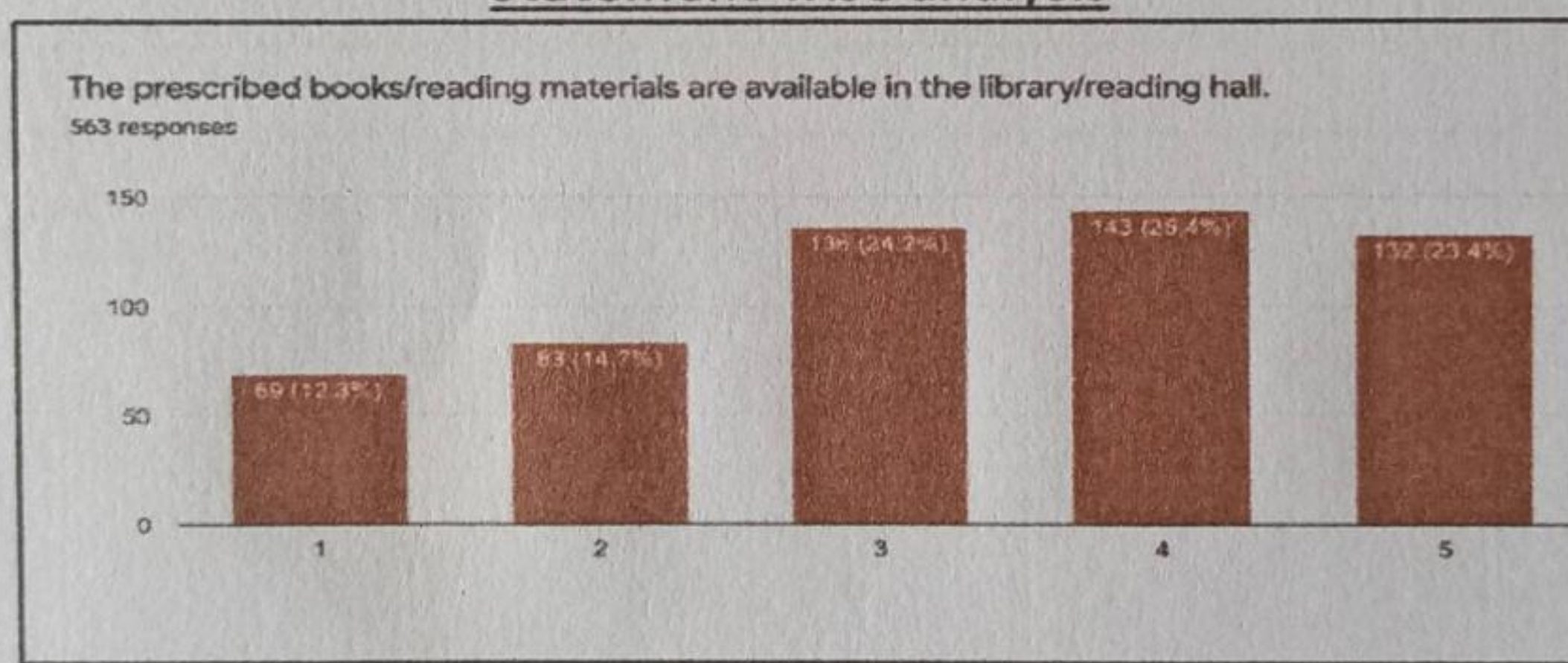


Part II. Infrastructure

S. No	Statements	Strongly disagree	Disagree	Neutral	Agree	Strongly agree	Percentage agrees 4 and above
1.	The prescribed books/reading materials are available in the library/reading hall	69	83	136	143	132	48.8
2.	Were the Laboratories adequately equipped with latest apparatus and properly maintained?	65	74	186	140	98	42.2
3.	What is your opinion about the library materials available in Library?	64	90	96	269	44	55.5
4.	Available reading space in library/seminar is satisfactory	72	90	176	175	50	39.9
5.	Internet facilities are available on the campus/library	187	110	133	66	67	23.6
6.	Toilets/washrooms are hygienic and properly maintained	154	106	158	116	29	25.75

7.	Clean drinking water is available on the campus	43	77	109	138	196	59.3
8.	Grievances/problems are redressed/solved well in time	40	87	215	186	35	39.2
9.	The campus is green and eco friendly	13	31	137	270	112	67.8
10.	The campus has adequate power supply	33	66	148	188	128	56.1
11.	Sports facilities & opportunities, to excel in sports, available in college is	79	50	87	274	73	61.6
12.	How do you find the Institution's administration?	86	32	-	292	153	79
13.	Reading Area in Library and Separate Common Rooms for girls and boys are available	242	-	177	-	144	25.5
14.	Toilets / Washrooms are clean and properly maintained	320				243	43.1
15.	How you rate overall environment of college	31	76	204	162	90	44.7

Statement-wise analysis



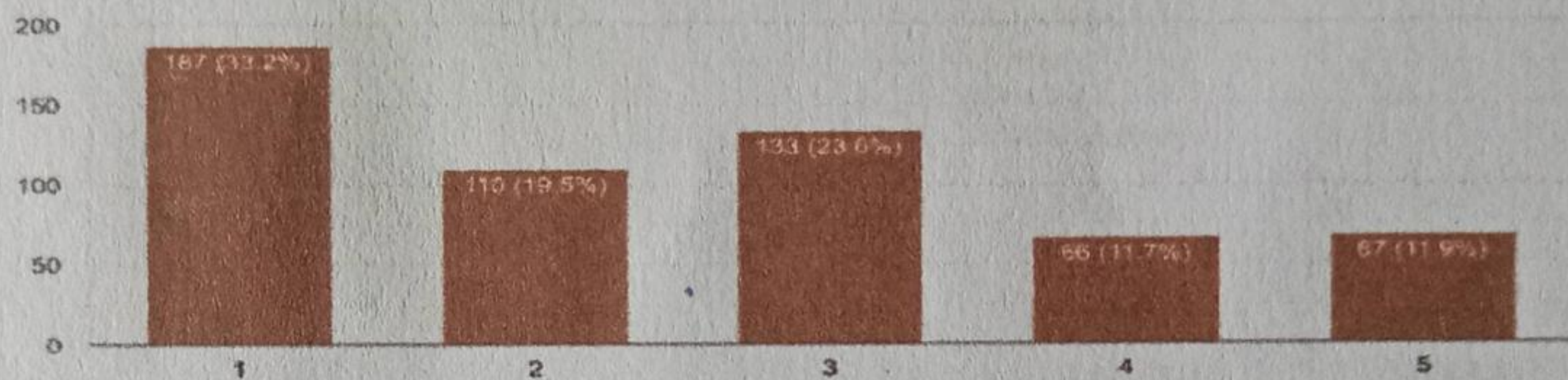
Available reading space in library/seminar is satisfactory.

563 responses



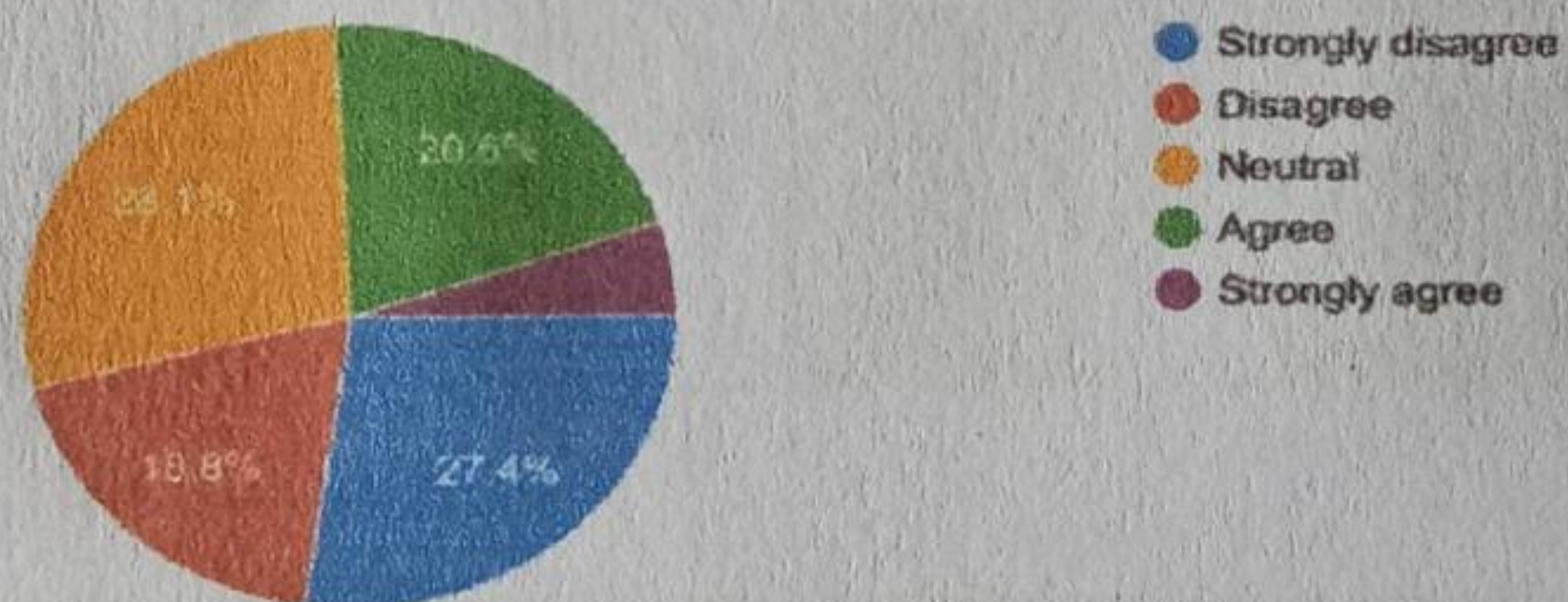
Internet facilities are available on the campus/library.

563 responses



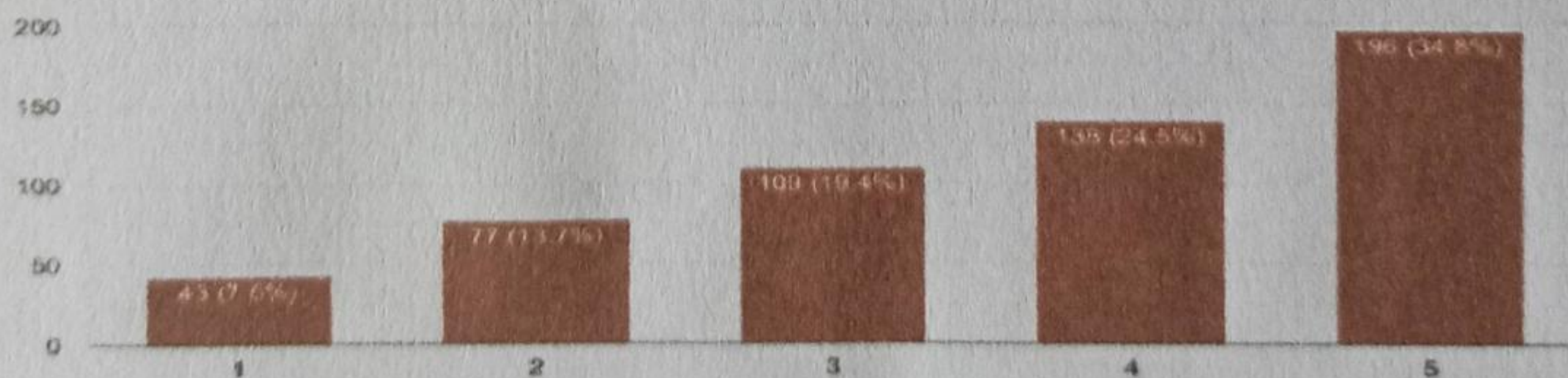
Toilets/washrooms are hygienic and properly maintained

563 responses



Clean drinking water is available on the campus.

563 responses



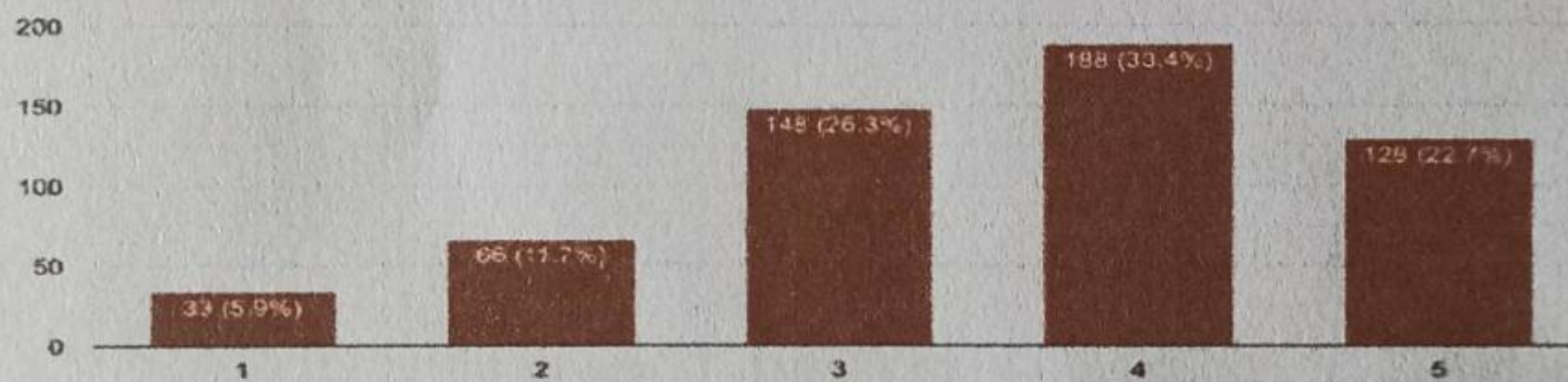
Grievances/problems are redressed/solved well in time
563 responses



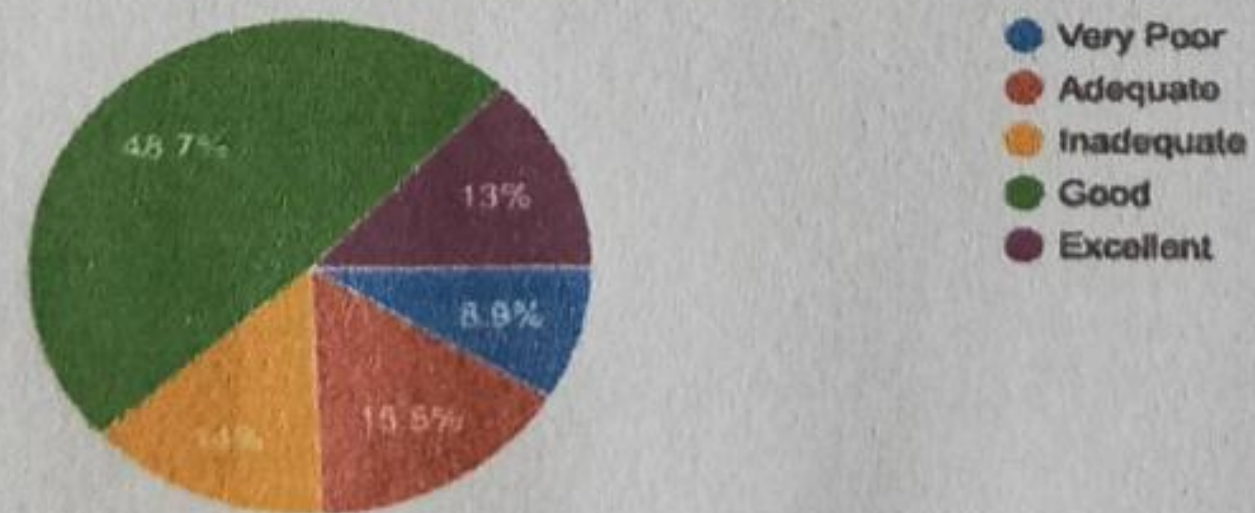
The campus is green and eco friendly
563 responses



The campus has adequate power supply.
563 responses



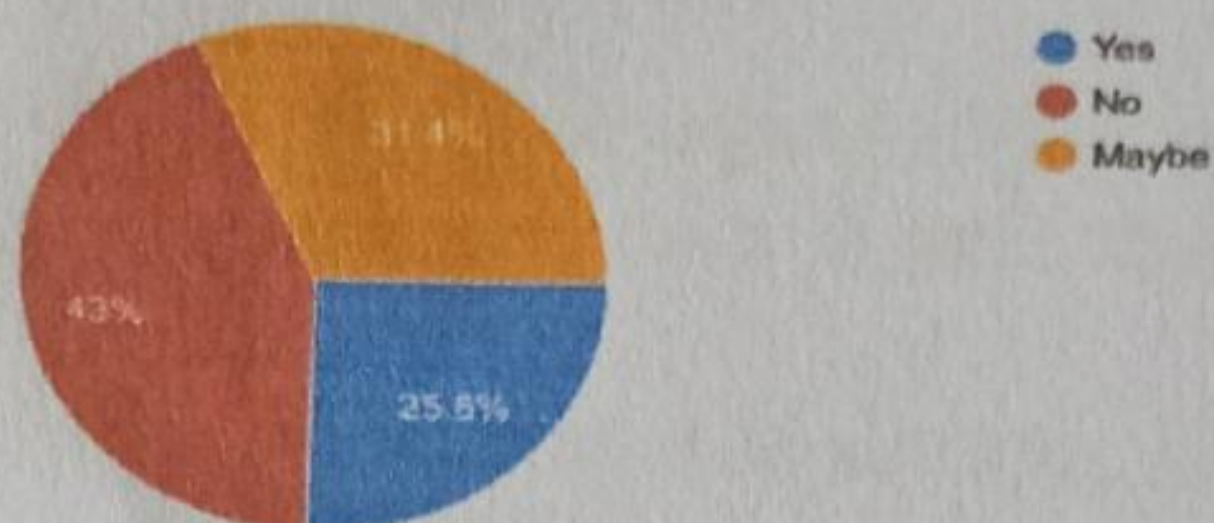
Sports facilities & opportunities, to excel in sports, available in college is :
563 responses



How do you find the Institution's administration?
563 responses



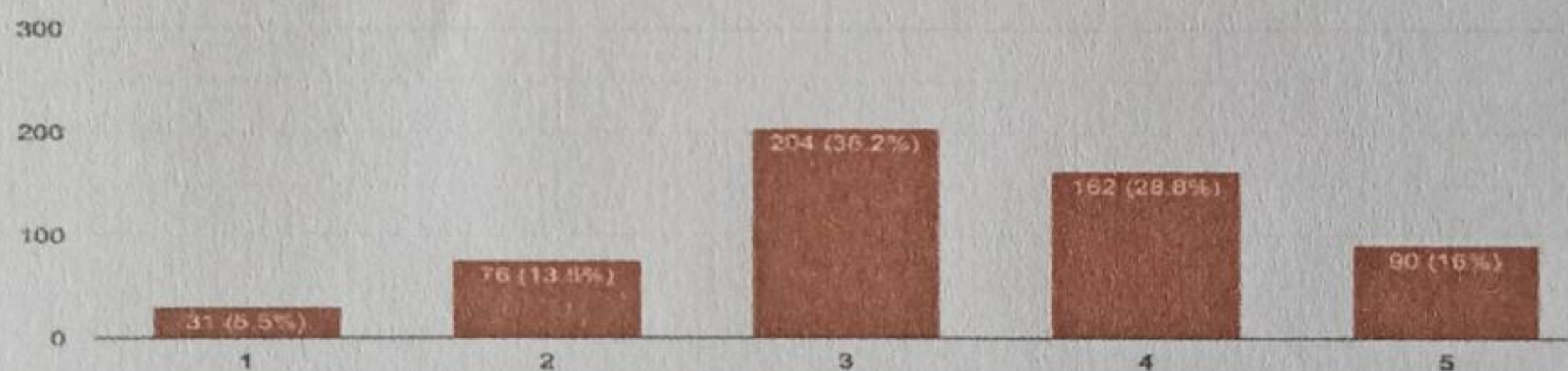
Reading Area in Library and Separate Common Rooms for girls and boys are available:
563 responses



Toilets / Washrooms are clean and properly maintained:
563 responses



How you rate overall environment of college
563 responses



The overall quality of College regarding Teaching – Learning process, Infrastructure and Students support services is very good:
563 responses



Overall analysis or the outcome received from the students

- Faculties who teach well are not able to take the classes because of their engagement in other works
- Time table should be followed strictly
- No proper communication with the students regarding classes, examination information, practicals exams
- Labs needs to be more equipped with instruments, apparatus and computer systems

- Use of more ICT tools like smart boards, presentation software, information visualization tools etc.
- More Co-curricular activities like speeches, debates and quiz, and other competitions, should be organized
- Skill Development classes should be organized specially for PG students in holidays
- Students should not be allowed to roam in the college they create the indiscipline in the college
- Proper sanitation and availability of clean drinking water requires attention
- Library should have a reading area
- Dress Code for students should be there
- Classrooms furniture and board needs to be renovated

Certified that the statement above is correct to the best of my knowledge and belief.

(C S Negi)
IQAC COORDINATOR
M.B. GOVT. P.G. COLLEGE
HALDWANI (NAINITAL)

(Dr. N S Bankoti)
Principal
M.B. Govt. P.G. College
Halwani (Nainital)